

## VISION P-62 (2006)

---



# VISION P-62 (2006)

General	
SHIPYARD	Vision Yachts
YEAR	2006
FLAG	D
CONSTRUCTION MATERIAL	GRP
UNDERWATER PROFILE	Planing
FINISH	Gelcoat

Price: **390,000.00 €**

Tax paid: Yes

5% (+ VAT) broker's commission is not included in the price.

Technical specification	
LENGHT	20.50 m
BEAM	5.18 m
DRAUGHT	1.18 m
DISPLACEMENT	55000.00 kg
WATER CAPACITY	1200.00 l
FUEL CAPACITY	3000.00 l
CABINS	3
BERTHS	6
TOILETS	3
CREW CABINS	1

Engine specification	
ENGINE TYPE	CARETPILAR
ENGINE POWER	2 x 1000.0 hp
DRIVE TYPE	Direct drive
MAX. SPEED	25.00 kn
ENGINE HOURS	449 h
FUEL TYPE	Diesel
GENERATOR	YES

## Equipment

bow thruster, stern thruster, electric anchor winch, mooring winch, swim ladder, bathing platform, teak on deck, teak in cockpit, cockpit table, outdoor shower, hydraulic gangway, trim tabs, windscreen wiper, bow cushions, stern cushions, bimini fly, stern awning, covers /sun shade set, fenders, mooring ropes, hot water system, electric toilet, black water tank, VHF, GPS plotter, autopilot, radar, compass, tridata, speed, echo sounder, searchlight, battery charger, 3 x LCD TV, SAT antenna, radio/CD, outside loudspeakers, air conditioning/heating, washing machine, dishwasher, refrigerator, fridge on flybridge, freezer, glassceramic hob, oven, navigation equipment, safety equipment, dinghy, davit for dinghi

## Interior

master cabin stern, VIP cabin, guest cabin, crew cabin, salon, leather in salon, galley, dinette, 3 x bathroom, 2nd helm, cockpit, flybridge, side door

## Disclaimer

Data are considered correct but not guaranteed. This document is not, in any case, a contractual document.

## VISION P-62 (2006)





## VISION P-62 (2006)



## VISION P-62 (2006)

---





## VISION P-62 (2006)



## VISION P-62 (2006)



## VISION P-62 (2006)

---





## VISION P-62 (2006)

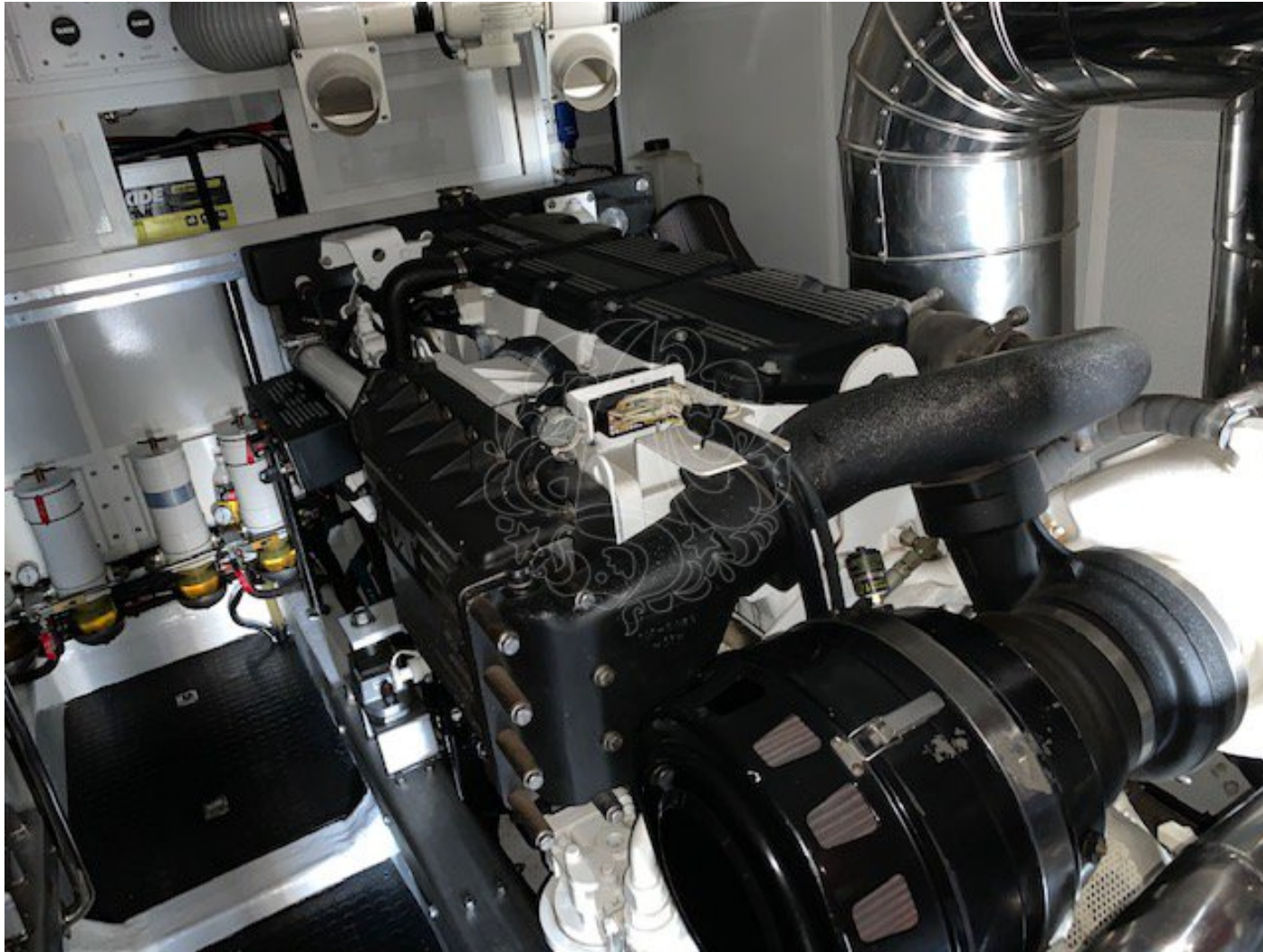


## VISION P-62 (2006)





## VISION P-62 (2006)





## VISION P-62 (2006)

